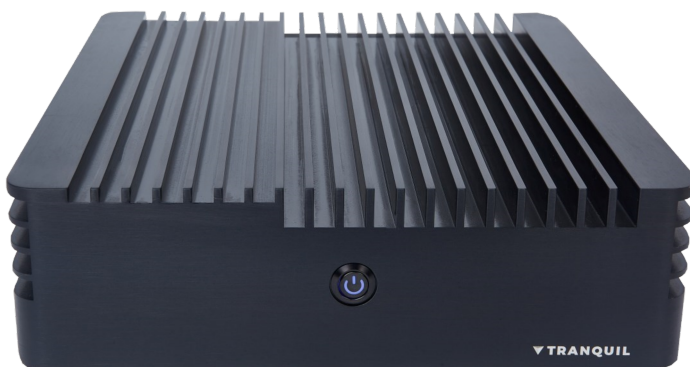


Tranquil Mini Rugged - Intel 7th Gen i3 7020U Mobile Single LAN - IP66

Our Mini Rugged range offers an array of processors options, IP rating levels, and both modern and legacy I/O

The Mini Rugged IP66 is the go anywhere computer for extreme environments: powered by Intel's i3 7020U, the Mini Rugged's strong design enables it to adapt to harshest operating circumstances. Whether exposed to dust, water, or wide temperature ranges, in an industrial context or outdoor, this product can be used in the most demanding conditions.



Key Features

- Processor: i3 7020U
- Operating Range: -20C to 70C
- IP66 Weather Proof
- 1Gbe LAN
- Maintenance free

Key benefits of FANLESS and RUGGED computers



No fans obviously means no noise, but it's not the only benefit!



No fans allow an important decrease in power consumption, making our products more sustainable!



A fanless computer eliminates the risk to draw in dust and dirt from the environment, the cause of potential failures and costly downtime.



The absence of moving parts enable our products to resist shocks and vibrations, for an increased reliability.



They are built to withstand harsh and constrained working conditions.



High Ingress Protection (IP) rating, indication the protection level of products against both solid and liquids in electrical enclosures



The in-house designed and milled aluminium chassis is optimized for efficient passive cooling and durability. Its conception proved their reliability in extended operating temperatures



The aluminium used for the chassis production is repurposed and recycled, and the production waste is recycled too!

Tranquil Mini Rugged - Intel 7th Gen i3 7020U Mobile Single LAN - IP66



Rear view

Technical Specification

Processor	Intel i3 7020U - 2 Cores / 4 Threads - 2.30 GHz - 3MB Cache		
Memory	Slots: 2x SO-DIMM Slots MAX Capacity: 32GB Type: DDR3L-1600 1.35V SO-DIMM ECC Support: No	Storage	4TB 2.5" SSD /
Graphics Controller	Intel HD Graphics 620	Graphics Interface	1x HDMI 1.4a – 4096 x 2304 @24hz 1x VGA – 1920 x 1200 @ 60HZ
Network Interface	RTL8111F - 1 x RJ45 - 10/100/1000 Mbps	Network Options	RTL8188EE - Wi-Fi IEEE 802.11 b/g/n - 2.4GHz/5Ghz RTL8188EE - Wi-Fi + Bluetooth IEEE 802.11 b/g/n - 2.4GHz/5Ghz - Dual Band 4G option
Network Feature	Wake-On-Lan PXE	Remote Management	
Hardware Monitoring	Watch Dog On-Board	Supported OS	Windows 7 - 32/64 bit Windows 10 - 32/64 bit Linux
Encryption	TPM 2.0		
Power Input	IP68 Buccaneer 400 3 Pin Power Socket		
Input Voltage	110-230V		
Consumption	15-35w		

Physical Specification

I/O Front	Power/reset switch	LED Front	Power
I/O Rear	IP68 Power Socket - Behind Panel Entry: 1x RJ45 for LAN, 2x USB2.0, 2x USB3.0, 1x VGA, 1x HDMI, Line out, MIC In	LED Rear	
I/O Optional	Dual Wireless Antenna	COM Port Option	
Operational Temp	-20C to 70C (-4F to 158F)	Storage Temp	-20°C to 60°C (-4°F to 140°F)
Maximum relative humidity	5% to 95%	Cooling Type	Passive Cooling
Size	60 x 208 x 263mm	Weight	3.4KG
Accessories	IP66 Power Cord, vesa/wall bracket	Optional Accessories	Wireless Antenna
Certifications	CE	Warranty	3 Years