

# BOSTON ROAMER 2110-0

**TURBO CHARGE YOUR REMOTE WORKING WITH  
THE POWER OF AMD RYZEN™**

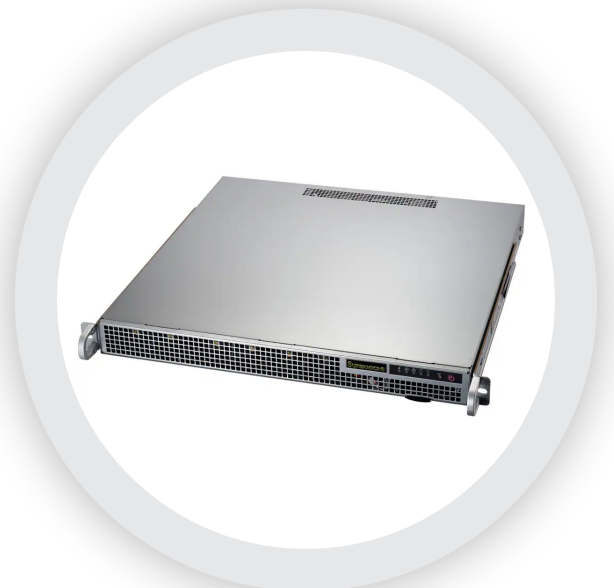
Designed for the rackmount workstation and entry level server market, the Boston Roamer 2110-0 is a unique 1U rack mountable computer, utilising AMD's Ryzen™ 7000 series processor, based on the latest Zen 4 architecture.

## KEY FEATURES:

- AMD Ryzen™ 7000 series CPU
- Up to 16 Cores or 32 Threads and 5.7GHz Turbo
- Up to 192GB of 5200MHz ECC DDR5 memory (Dual Channel)
- 1x PCIe 5.0 x16 – single width GPU support
- 2x PCIe 5.0 NVMe M.2 with RAID
- IPMI Remote Management with iKVM and Virtual Media
- Onsite support and warranty up to 5 years

## PRODUCT DESCRIPTION

The Boston Roamer 2110-0 is a powerful remote workstation and server platform utilising the AMD Ryzen™ 7000 Series processor. Options include even the flagship Ryzen 9 7950X3D which offers 128MB of L3 cache, utilising AMD's 3D V-Cache technology. Features include up to 16 cores and 32 threads, and clock speeds of up to 4.7GHz base and a huge 5.7GHz Turbo. Equally, memory support is excellent with up to 192GB DDR5 5200MHz ECC memory, ensuring the greatest stability.



The Boston Roamer 2110-0 offers unparalleled multitasking and industry leading workstation performance in such a compact short depth 1U form factor. Flexible expansion options include a x16 PCIe 5.0 add on card, two M.2 PCIe 5.0 NVMe SSD's and up to 4x SAS/SATA drives.

Server grade features include dual 1GbE ports, a platinum efficiency rated power supply and a dedicated network port for BMC management utilising IPMI and Redfish - allowing for full lights out management and KVM control via secure remote access.

Optionally powered by NVIDIA RTX A4000 GPU, the Boston Roamer 2110-0 can act as a well-rounded remote workstation, allowing users to access the full resources of this powerful platform remotely from anywhere in the world.

With the workstation, fan noise, heat and data secure in the data centre, the power of AMD Ryzen™ and the latest NVIDIA RTX A4000 GPU can be at your fingertips, leaving you free to roam, no compromises.

## SPECIFICATIONS

MODEL	BOSTON ROAMER 2110-0
Form Factor	1U Rackmount
Chipset	AMD B650
Processor Support	AMD Ryzen™ 7000 Series CPU
Memory Type	DDR4 ECC 5200MHz
Memory Capacity	Up to 192GB in 4 DIMM slots (Dual Channel)
Expansion Slots	1x PCIe 5.0 x16 FHHL
Drive Support	1x Fixed 3.5" or 4x 2.5" SATA (supports RAID 0/1/5/10) 2x M.2 PCIe 5.0 x4 in 2280/22110 form factor (supports RAID 0/1)
Network Connectivity	2x 1GbE RJ45 ports 1x 1GbE RJ45 port (Management Interface)
Power Supply / Efficiency	500W 80 Plus Platinum Efficiency

Our Roamer series brings enterprise levels of compute to remote users in this rapidly changing global environment. The Roamer range features rack mountable solutions that are both scalable and very dense with powerful professional compute. This allows for cutting-edge performance and features to be brought to professionals remotely wherever they are based without compromise.

Behind Roamer are industry-leading R&D and Sales teams who are on hand to assist you in either an off-the-shelf purchase, or a more tailored specification including custom branding.

**ROAMER**  
remote access

**ENABLING  
REMOTE WORK**

**VISIT: BOSTON.CO.UK**