

KEY FEATURES

ZutaCore HyperCool 2-phase direct-to-chip liquid cooling technology

Dual 3rd Gen Intel Scalable processors with up to 40 Cores / 80 Threads

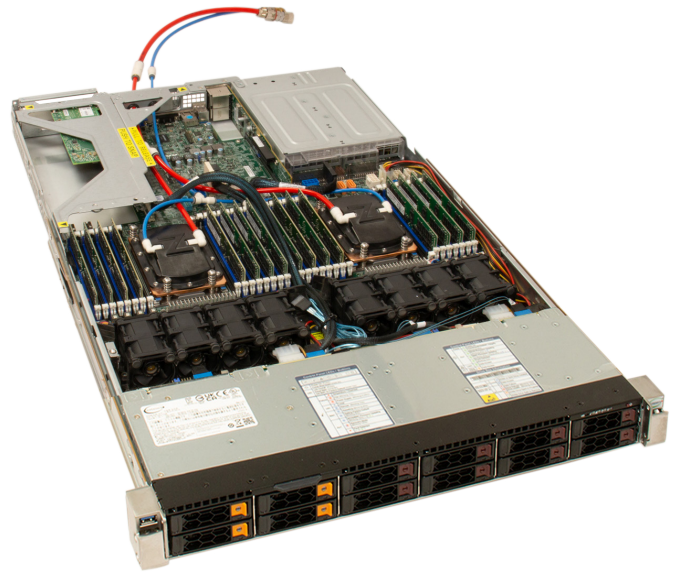
Up to 8TB DDR4-3200 ECC memory (8 Channels)

Intel Optane Persistent Memory 200 series

3x PCIe 4.0 x16

Flexible networking options

Dedicated IPMI Server Management
1GbE network port



BOSTON FENWAY 1140-0T3N-DC2

BASED ON SUPERMICO'S 1U ULTRA SERVER RANGE, THE BOSTON FENWAY 1140-0T3N-DC2 IS A LIQUID-COOLED SERVER UTILISING 2-PHASE DIRECT-TO-CHIP TECHNOLOGY SPORTING 3RD GEN INTEL® XEON® SCALABLE PROCESSORS BASED ON ICE LAKE ARCHITECTURE.

This server platform comes with high specification and features a dual socket P+ motherboard that supports two Intel Xeon processors, with up to 40 cores and 80 threads. It also has a TDP of 270W, 8TB of DDR4-3200 ECC memory and 3 PCIe 4.0 expansion cards. Another great feature is the support of Intel Persistent Memory technology (up to 8TB) that helps accelerate large-memory computing by keeping more data closer to the CPU.

It is housed in a 1U chassis that supports 12 hot-swap SATA, SAS or NVMe drives. Flexible networking allows for selection of the right connectivity options to fit practically every requirement. Enterprise features, including a dedicated port for IPMI remote management and 1200W redundant titanium level PSU's, come as standard.

Boston has partnered with ZutaCore to take server cooling to the next level. The Boston Fenway 1140-0T3N-DC2 is using HyperCool; a direct-on-chip, waterless, evaporative 2-phase liquid cooling solution. This technology has many benefits – it allows for more stable frequencies under load which increases CPU performance while lowering the overall server power consumption at the same time.



NETWORKING

We have a range of switches and transceivers. Get in touch with our sales team to discuss your requirements.



LEASING

All of our hardware and services are available to lease. Get in touch with our sales team to discuss your requirements.

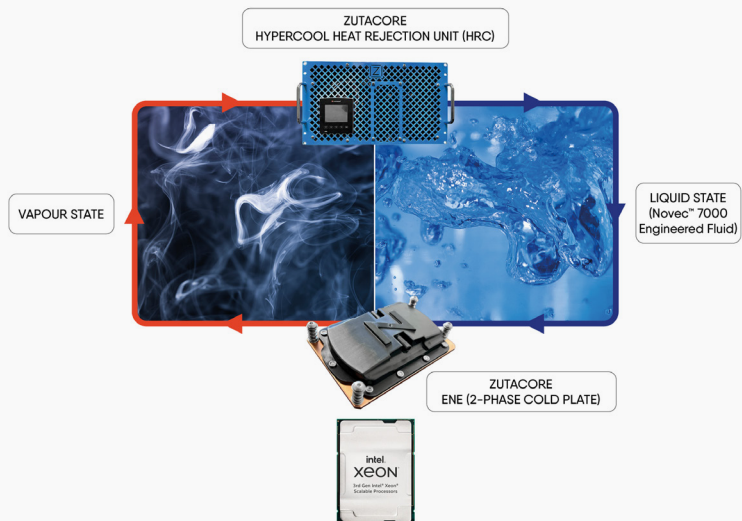
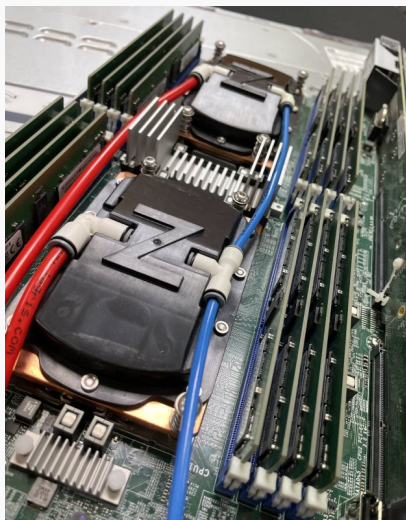


GLOBAL SUPPORT & WARRANTY

Our after sales support team are on hand to answer any queries and provide warranty support services.

SYSTEM SPECIFICATIONS

MODEL	BOSTON FENWAY 1140-0T3N-DC2
FORM FACTOR	1U Rackmount
CHIPSET	Intel® C621A
PROCESSOR SUPPORT	3 rd Gen Intel® Xeon® Scalable Processors
MEMORY TYPE	DDR4 ECC 3200MHz
MEMORY CAPACITY	Up to 8TB in 32 DIMM slots (8 Channel)
EXPANSION SLOTS	1 PCIe 4.0 x16 FH/9.5" Length 1 PCI-E 4.0 x16 FHHL 1 PCI-E 4.0 x16 Proprietary Internal
DRIVE SUPPORT	12 Hot-swap 2.5" SATA bays or SAS3 (optional) or U.2 NVMe (optional)
NETWORK CONNECTIVITY	Flexible networking options
POWER SUPPLY / EFFICIENCY	1200W 80 Plus Titanium Efficiency
SYSTEM DIMENSIONS	437x43x739mm (WxHxD)



Customised configurations are also available - contact us to discuss your requirements.